

LETS Tree Mapping Protocol

Your names: _____, _____, _____

Date: _____

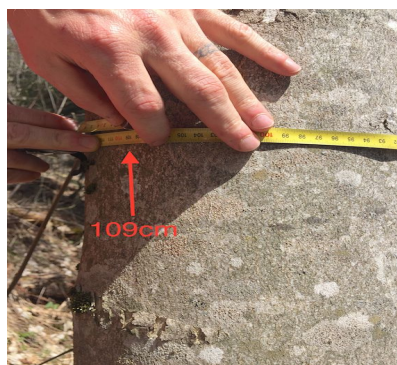
Goals: To identify each tree on the LETS plot by location, species, and circumference. To record the data about each tree as accurately as possible both in the myObservatory (myO) app and on the sheet of paper provided.

Materials:

1. Data sheet on back of this page and myO app
2. Small measuring tape
3. Tree ID guide ([large](#), [medium](#), and [small](#) formats--choose your favorite)
4. Team: At least 3 people
5. Monocular scope (for identifying trees)

Steps:

1. **Begin mapping at the point labeled “1” at the northwest (NW) corner of the 30X30m plot.** One partner writes down the data (and enters data into the myO app), one partner measures tree circumferences, and one partner is quality control (makes sure measurement is correct and trees are not double counted or missed). All team members collaborate to determine the tree species.
2. **Measure, map, and record** all trees in sub quadrat A before moving on to sub quadrat B. Measure and record all trees in sub quadrat B before moving on to C, etc, until the final sub quadrat. Be careful not to double count or miss trees. Write very neatly!
3. **Measure tree circumference** by using the “circumference at breast height” method. Stand on the **uphill** side of the tree and place the measuring tape around the tree evenly (not crooked). Measure at an average person’s breast height. Photograph each measurement as shown in the image on myO app form.



Codes for tree species: (only record 30cm circumference and larger)

<p>Conifers: NS - Norway spruce, SF - Silver fir LA - Larch SP - Scots Pine EY - European Yew UC - Unknown conifer</p>	<p>Large Deciduous: RO - Rowan EA - European ash SM - Sycamore maple NM - Norway maple FM - Field maple WB - White birch UD - Unknown Deciduous</p>	<p>SB - Silver birch EB - European Beech BA - Black alder WA - White alder SO - Sessile oak WE - Wych Elm EH - European hornbeam</p>	<p>Smaller Deciduous: HA - Hazelnut LI - Lilac BL - Blackthorn CH - Common hawthorn</p>
--	--	--	--

